




BOILER[®]
Water Heater System

www.boilera.com.tr



ADDRESS : Güldiken OSB Neighborhood,
OSB Aşıkpaşa Street, Nu:36
Kırşehir/Turkey

PHONE : (0386) 272 10 10

FAX : (0386) 272 10 10

E-MAIL : bilgi@boilera.com.tr


BOILER[®]
Water Heater System



www.boilera.com.tr

About Us

Bekir ERASLAN, who has been carrying out successful activities in many fields until today, noticed the transformation of Turkey in the field of energy in 2016 and established Boilera Heating Systems.

Despite being a new company, Boilera Heating Systems has the distinction of being the first washing and enameling facility with a 6000-liter boiler in one piece, as a result of serious investments.

Production is carried out with the latest technology CNC controlled welding machines in our factory, which has a production area of 15.000 m², 10.000 m² closed and 5.000 m² open. Products tested with specially designed water pressure machines are fired in the industry's largest enamel baking oven and quality control is carried out with special cameras.

Boilera Heating Systems has shed light on the sector in terms of its approaches products, services and value since the first day it started to serve; is a company that takes specialization and innovative thinking in parallel.



BOILERA
Water Heater System

Leading Company In The Industry



www.boilera.com.tr

BOILERA
Water Heater System



4

ELEGANCE

Boiler With Single Coil



BOILEREA

BOILEREA

BOILEREA
Water Heater SystemBOILEREA
Water Heater System

5

First and Only in TURKEY

6000 Liters Monoblock Boiler



ELEGANCE Boiler With Single Coil

- Designed according to EN12897.
- Steel main body conforming to DIN EN 10111-98 norms.
- Enamel plated internal surfaces conforming to DIN 4753.3 norms.
- Working ability 10 Bars and 95 Degrees of Celcius
- CFC Free Heavy polyurethane (Density: 38KGS/M3)
- Painted and galvanised exterior surface
- Cathodic protection with Magnesium
- ABS, top and bottom covers.
- Resistance heater (Optional)

100 lt - 600 lt

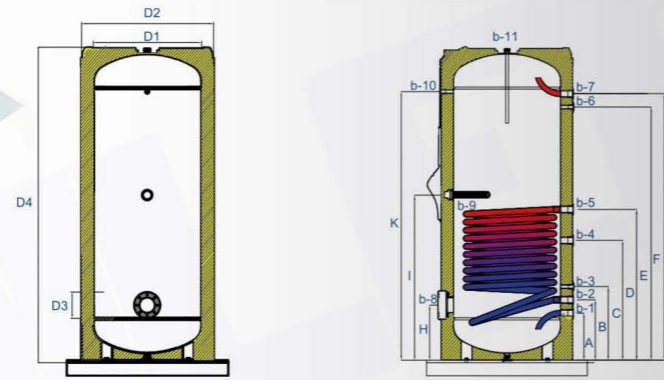
50 mm Polyurethane
Sheath: Coated

100 lt - 6000 lt

80 mm Polyurethane
80 mm Foam
Sheath: Winlex

Elegance Single Coil Capacity Table

MODEL	ELG-T 100 lt	ELG-T 160 lt	ELG-T 200 lt	ELG-T 300 lt	ELG-T 400 lt	ELG-T 500 lt	ELG-T 600 lt	ELG-T 800 lt	ELG-T 1000 lt	ELG-T 1500 lt	ELG-T 2000 lt	ELG-T 2500 lt	ELG-T 3000 lt	ELG-T 4000 lt	ELG-T 5000 lt	ELG-T 6000 lt
Total Capacity (lt)	100	160	200	300	400	500	600	800	1000	1500	2000	2500	3000	4000	5000	6000
Weight (kg)	100	85	95	125	150	187	210	281	392	392	558	640	719	1024	1115	1218
Outer Diameter (mm)	550	550	550	642	740	740	740	954	1006	1116	1272	1472	1472	1672	1672	1672
Height (mm)	970	1445	1505	1580	1515	1895	2145	1975	2170	2370	2400	2330	2580	2765	2930	3160
Internal Tank (Sheet)	3 mm	3 mm	3 mm	3 mm	3 mm	3 mm	4 mm	4 mm	4 mm	4 mm	5 mm	5 mm	5 mm	6 mm	6 mm	6 mm
Coil Square (m2)	0,80	1,08	1,26	1,35	1,73	2,26	2,26	3,1	3,1	4,9	5,2	5,4	7	8,5	10	12



Elegance Single Coil Size Specification Table

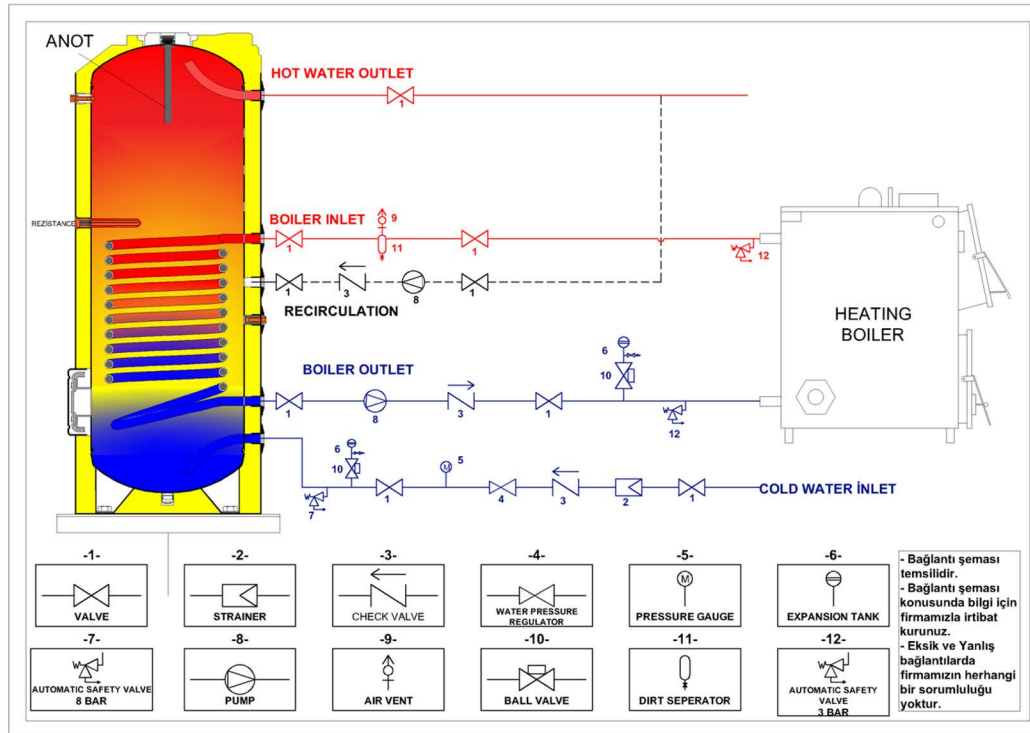
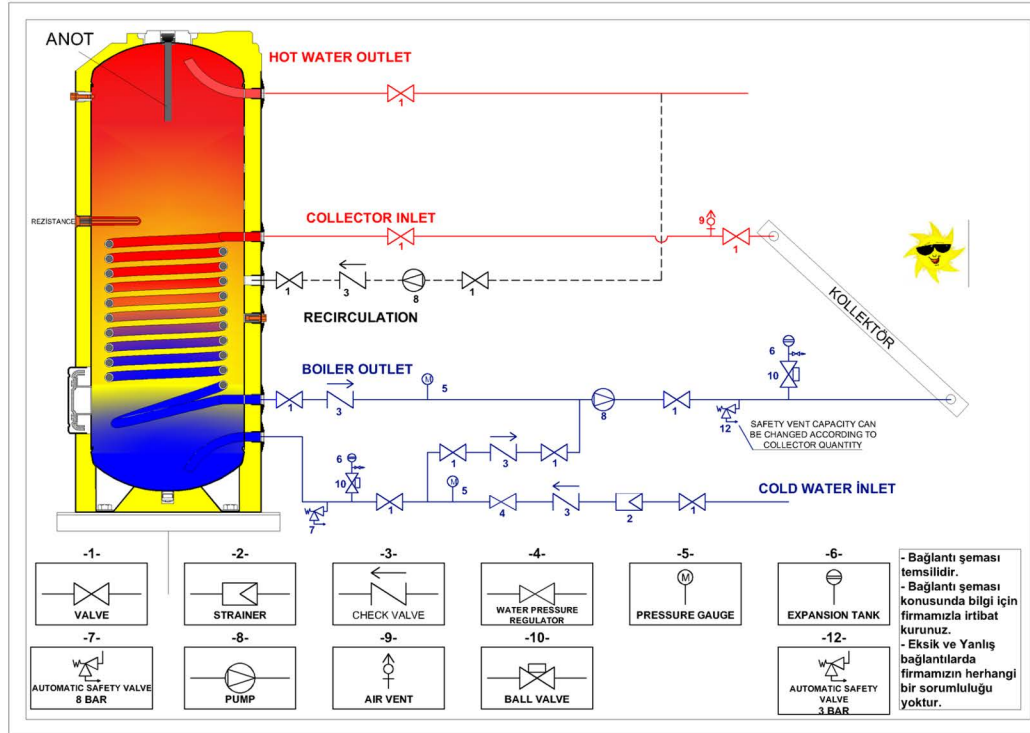
MODEL		ELG-T 100 lt	ELG-T 160 lt	ELG-T 200 lt	ELG-T 300 lt	ELG-T 400 lt	ELG-T 500 lt	ELG-T 600 lt	ELG-T 800 lt	ELG-T 1000 lt	ELG-T 1500 lt	ELG-T 2000 lt	ELG-T 2500 lt	ELG-T 3000 lt	ELG-T 4000 lt	ELG-T 5000 lt	ELG-T 6000 lt
Cold Water Inlet	b1	1"	1"	1"	1"	1"	1"	1-1/4"	1-1/4"	1-1/4"	1-1/4"	1-1/4"	2"	2"	2-1/2"	2-1/2"	2-1/2"
Hot Water Outlet	b7	1"	1"	1"	1"	1"	1"	1-1/4"	1-1/4"	1-1/4"	1-1/4"	1-1/4"	2"	2"	2-1/2"	2-1/2"	2-1/2"
By-Pass	b4	1"	1"	1"	1"	1"	1"	1-1/4"	1-1/4"	1-1/4"	1-1/4"	1-1/4"	2"	2"	2-1/2"	2-1/2"	2-1/2"
Coil Outlet	b2	1"	1-1/4"	1-1/4"	1-1/4"	1-1/4"	1-1/4"	1-1/4"	1-1/4"	1-1/4"	1-1/4"	1-1/4"	1-1/4"	1-1/4"	1-1/4"	1-1/4"	1-1/4"
Coil Inlet	b5	1"	1-1/4"	1-1/4"	1-1/4"	1-1/4"	1-1/4"	1-1/4"	1-1/4"	1-1/4"	1-1/4"	1-1/4"	1-1/4"	1-1/4"	1-1/4"	1-1/4"	1-1/4"
Sensor	b3-b6	1-1/2"	1-1/2"	1-1/2"	1-1/2"	1-1/2"	1-1/2"	1-1/2"	1-1/2"	1-1/2"	1-1/2"	1/2"	1/2"	1/2"	1/2"	1/2"	1/2"
Resistance	b9	1-1/4"	1-1/4"	1-1/4"	2"	2"	2"	2"	2"	2"	2"	2"	2"	2"	2"	2"	2"
Magnesium Anode	b11	1"	1"	1"	1"	1"	1"	1-1/4"	1-1/4"	1-1/4"	1-1/4"	1-1/4"	1-1/4"	1-1/4"	1-1/4"	1-1/4"	1-1/4"
Cleaning Flange	b8	----	108	108	108	108	108	108	108	108	108	108	125	125	125	125	125

Bottom Coil Capacity Table

		ELG-T 100 lt	ELG-T 160 lt	ELG-T 200 lt	ELG-T 300 lt	ELG-T 400 lt	ELG-T 500 lt	ELG-T 600 lt	ELG-T 800 lt	ELG-T 1000 lt	ELG-T 1500 lt	ELG-T 2000 lt	ELG-T 2500 lt	ELG-T 3000 lt	ELG-T 4000 lt	ELG-T 5000 lt	ELG-T 6000 lt	
45°C	LT/h		960	1216	1520	1640	2100	2300	2300	2975	2975	3900	4200	4600	5600	6350	7740	8215
60°C	LT/h		640	740	925	945	1240	1390	1390	1840	1840	2640	2665	2990	3500	4400	5640	6890

Heater Liquid Temp. 90 C Water Input 10 C

Connection Diagrams For Boiler With Single Coil



PERIODIC MAINTENANCE

- Boiler maintenance should be done once a year. In high temperature use and in cases where the quality of the water is not suitable, the maintenance intervals should be shortened.
- Disconnect the electrical connection of the device before the boiler.
- The hot water circuit should be run and the circulation and hot water production should be checked.
- It should be checked whether water is leaking from the device itself and at the connection points.
- Check valve is vital for safety valve and pressure reducing device. For this reason, they should be checked during maintenance and if they are not working, they should be replaced with a new one.
- Temperature indicator, device pump and thermostat should be checked. If it does not work, it should be replaced with a new one.
- Magnesium anode placed in order to prevent corrosion should be checked once a year. If necessary, it should be replaced with a new one. The control of the anode rod is provided by the anode indicator located on the electrical panel of the boiler. If the pointer on the indicator moves to the red side when the button on the anode indicator is pressed, the anode rod needs to be changed. Otherwise, the life of the boiler will be shortened.
- In order to get the maximum performance from the boiler, the limestones, dirt and residues that will form in the boiler should be cleaned by opening the cleaning cover at certain intervals depending on the hardness of the mains water.

WATER OVER 30 FR HARDNESS DEGREE SHOULD BE GIVEN TO THE BOILER AFTER THEY ARE SOFTENED.

ELEGANCE

Boiler With Double Coil



First and Only in TURKEY

6000 Liters Monoblock Boiler



ELEGANCE Boiler With Double Coil

- Designed according to EN12897.
- Steel main body conforming to DIN EN 10111-98 norms.
- Enamel plated internal surfaces conforming to DIN 4753.3 norms.
- Working ability 10 Bars and 95 Degrees of Celcius
- CFC Free Heavy polyurethane (Density: 38KGS/M3)
- Painted and galvanised exterior surface
- Cathodic protection with Magnesium
- ABS, top and bottom covers.
- Resistance heater (Optional)

160 lt - 600 lt

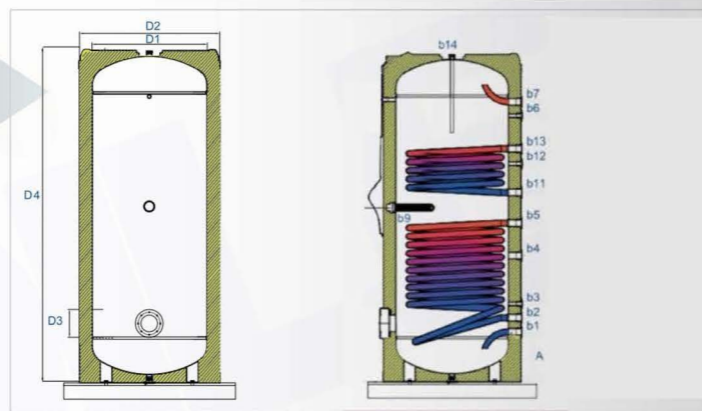
50 mm Polyurethane
Sheath: Coated

160 lt - 6000 lt

80 mm Polyurethane
80 mm Foam
Sheath: Winlex

Elegance Double Coil Capacity Table

MODEL	ELG-Ç 160 lt	ELG-Ç 200 lt	ELG-Ç 300 lt	ELG-Ç 400 lt	ELG-Ç 500 lt	ELG-Ç 600 lt	ELG-Ç 800 lt	ELG-Ç 1000 lt	ELG-Ç 1500 lt	ELG-Ç 2000 lt	ELG-Ç 2500 lt	ELG-Ç 3000 lt	ELG-Ç 4000 lt	ELG-Ç 5000 lt	ELG-Ç 6000 lt
Total Capacity (lt)	160	200	300	400	500	600	800	1000	1500	2000	2500	3000	4000	5000	6000
Weight (kg)	98	112	141	168	209	231	310	353	438	610	684	781	1116	1230	1315
Outer Diameter (mm)	550	550	642	740	740	740	954	1010	1116	1272	1472	1472	1672	1672	1672
Height (mm)	1455	1005	1580	1515	1895	2145	1975	2170	2370	2400	2330	2580	2765	2930	3160
Internal Tank (Sheet)	3 mm	3 mm	3 mm	3 mm	3 mm	3 mm	4 mm	4 mm	4 mm	5 mm	5 mm	5 mm	6 mm	6 mm	6 mm
Coil Square (m2)	0,6	0,8	1,03	1,2	1,2	1,2	1,56	1,56	2,2	2,8	3,3	3,4	4,25	5,01	6
Coil Square (m2)	1,08	1,26	1,35	1,73	2,26	2,26	3,1	3,1	4,9	5,2	5,4	7	8,5	10	12



Elegance Double Coil Size Specification Table

MODEL	ELG-Ç 160 lt	ELG-Ç 200 lt	ELG-Ç 300 lt	ELG-Ç 400 lt	ELG-Ç 500 lt	ELG-Ç 600 lt	ELG-Ç 800 lt	ELG-Ç 1000 lt	ELG-Ç 1500 lt	ELG-Ç 2000 lt	ELG-Ç 2500 lt	ELG-Ç 3000 lt	ELG-Ç 4000 lt	ELG-Ç 5000 lt	ELG-Ç 6000 lt	
Cold Water Inlet	b1	1"	1"	1"	1"	1"	1"	1-1/4"	1-1/4"	1-1/4"	1-1/4"	2"	2"	2-1/2"	2-1/2"	2-1/2"
Hot Water Outlet	b7	1"	1"	1"	1"	1"	1"	1-1/4"	1-1/4"	1-1/4"	1-1/4"	2"	2"	2-1/2"	2-1/2"	2-1/2"
By-Pass	b4	1"	1"	1"	1"	1"	1"	1-1/4"	1-1/4"	1-1/4"	1-1/4"	2"	2"	2-1/2"	2-1/2"	2-1/2"
Coil Outlet	b2-b11	1-1/4"	1-1/4"	1-1/4"	1-1/4"	1-1/4"	1-1/4"	1-1/4"	1-1/4"	1-1/4"	1-1/4"	1-1/4"	1-1/4"	1-1/4"	1-1/4"	1-1/4"
Coil Inlet	b5-b13	1-1/4"	1-1/4"	1-1/4"	1-1/4"	1-1/4"	1-1/4"	1-1/4"	1-1/4"	1-1/4"	1-1/4"	1-1/4"	1-1/4"	1-1/4"	1-1/4"	1-1/4"
Sensor	b3-b6-b12	1/2"	1/2"	1/2"	1/2"	1/2"	1/2"	1/2"	1/2"	1/2"	1/2"	1/2"	1/2"	1/2"	1/2"	1/2"
Resistance	b9	1-1/4"	1-1/4"	2"	2"	2"	2"	2"	2"	2"	2"	2"	2"	2"	2"	2"
Magnesium Anode	b14	1"	1"	1"	2"	2"	2"	2"	2"	1-1/4"	1-1/4"	1-1/4"	1-1/4"	1-1/4"	1-1/4"	1-1/4"
Cleaning Flange	b8	108	108	108	108	108	108	108	108	108	125	125	125	125	125	125

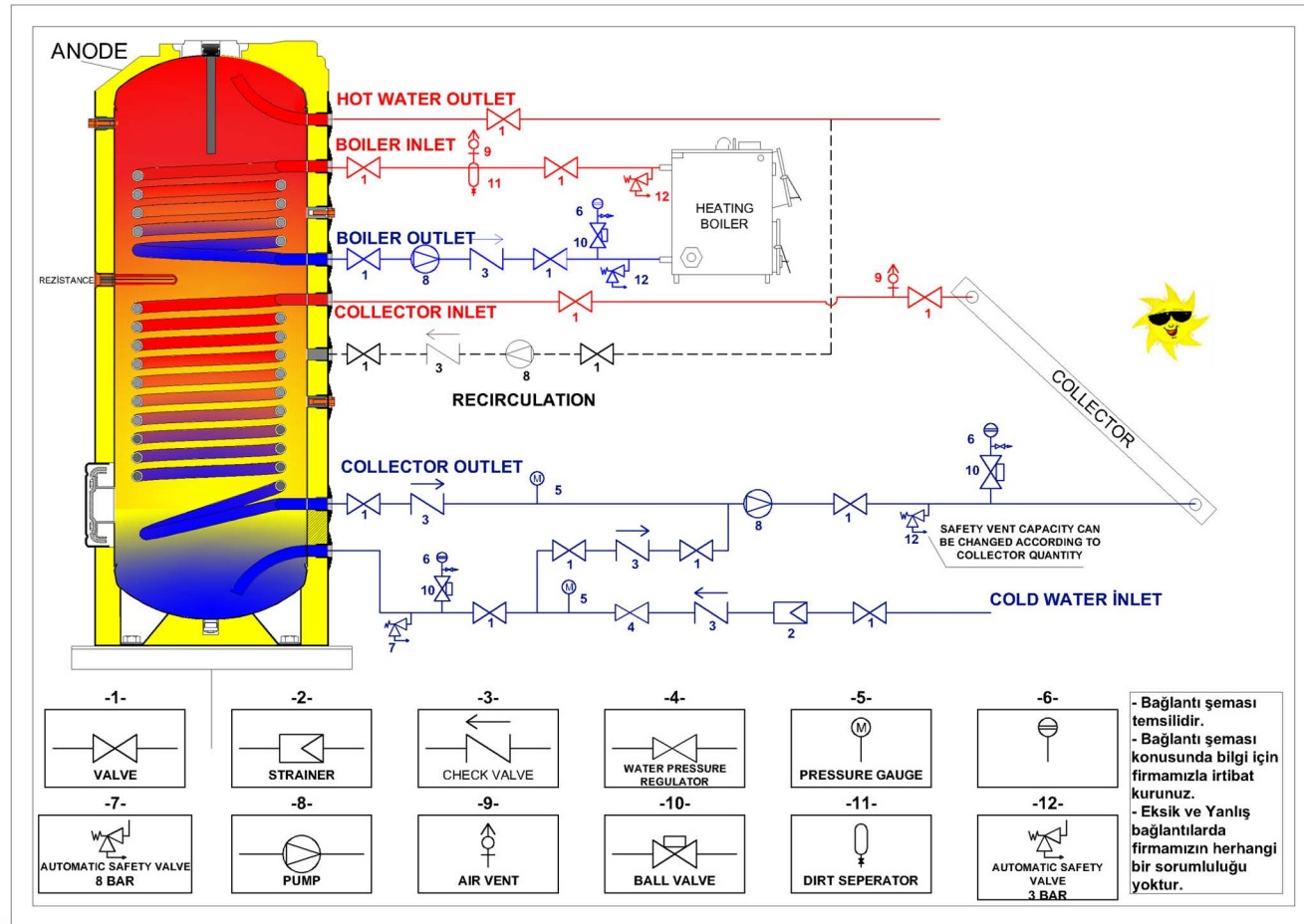
Bottom Coil Capacity Table

	ELG-Ç 160 lt	ELG-Ç 200 lt	ELG-Ç 300 lt	ELG-Ç 400 lt	ELG-Ç 500 lt	ELG-Ç 600 lt	ELG-Ç 800 lt	ELG-Ç 1000 lt	ELG-Ç 1500 lt	ELG-Ç 2000 lt	ELG-Ç 2500 lt	ELG-Ç 3000 lt	ELG-Ç 4000 lt	ELG-Ç 5000 lt	ELG-Ç 6000 lt	
Heater Liquid Temp. 90 C Water Input 10 C																
45°C LT/h		1216	1520	1640	2100	2300	2300	2975	2975	3900	4200	4600	5600	6350	7740	8215
60°C LT/h		740	925	945	1240	1390	1390	1840	1840	2640	2665	2990	3500	4400	5640	6890

Top Coil Capacity Table

	ELG-Ç 160 lt	ELG-Ç 200 lt	ELG-Ç 300 lt	ELG-Ç 400 lt	ELG-Ç 500 lt	ELG-Ç 600 lt	ELG-Ç 800 lt	ELG-Ç 1000 lt	ELG-Ç 1500 lt	ELG-Ç 2000 lt	ELG-Ç 2500 lt	ELG-Ç 3000 lt	ELG-Ç 4000 lt	ELG-Ç 5000 lt	ELG-Ç 6000 lt	
Heater Liquid Temp. 90 C Water Input 10 C																
45°C LT/h		840	1050	1360	1420	1560	1560	1850	1850	2365	2640	2770	3540	4690	5850	6680
60°C LT/h		552	690	890	1050	1050	1050	1135	1135	1525	2050	2610	3160	4230	5165	6310

Connection Diagrams For Boiler With Double Coil

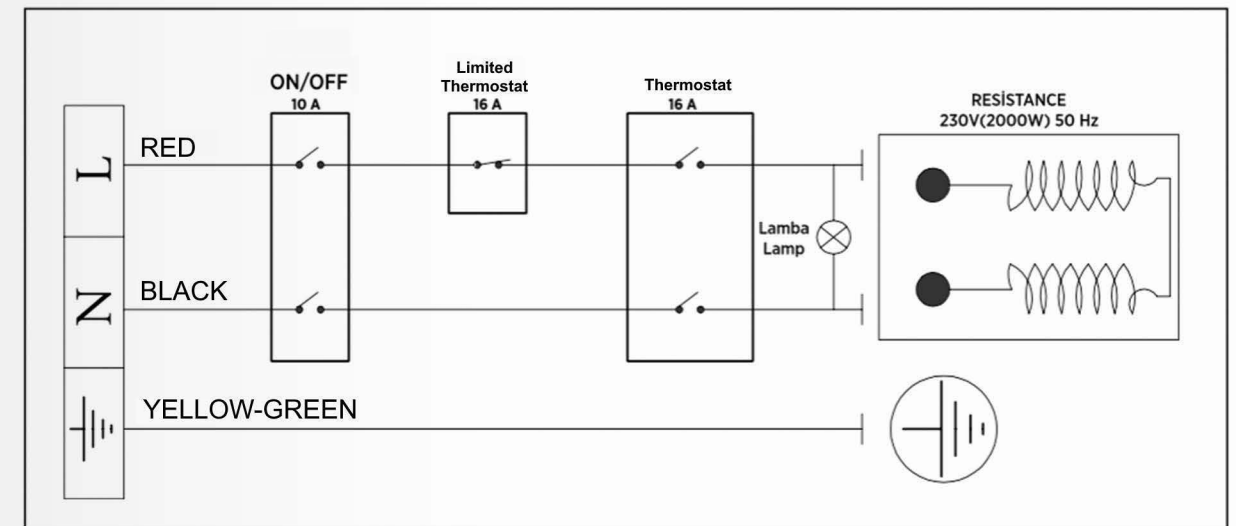


ELECTRICAL INSTALLATION

- Optional thermostatic resistance usage voltage is 220 Volt AC.
- If the mains is 110 Volt, connect a 110/220 Volt 2000 watt transformer.
- If the amperage of the fuse where you will use the boiler is less than 16 amps, replace the fuse.
- Make the resistance mains connection with a cable section of at least 3*1.5 mm.

! GROUNDING LINE IS MANDATORY. OUR COMPANY IS NOT RESPONSIBLE FOR CONDITIONS OTHERWISE.

Electricity Diagramme



ELEGANCE Accumulation Tank



First and Only in TURKEY

6000 Liters Monoblock Boiler



ELEGANCE Accumulation Tank

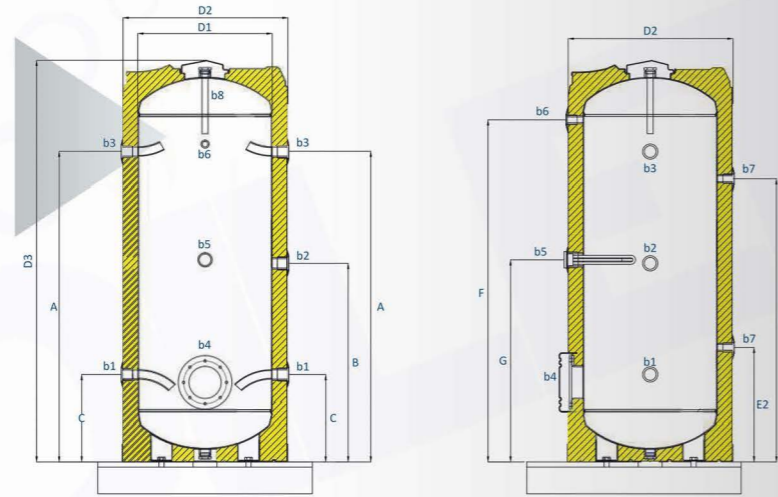
- Designed according to EN12897.
- Steel main body conforming to DIN EN 10111-98 norms.
- Enamel plated internal surfaces conforming to DIN 4753.3 norms.
- Working ability 10 Bars and 95 Degrees of Celcius
- CFC Free Heavy polyurethane (Density: 38KGS/M3)
- Painted and galvanised exterior surface
- Cathodic protection with Magnesium
- ABS, top and bottom covers.
- Resistance heater (Optional)

100 lt - 600 lt	100 lt - 6000 lt
50 mm Polyurethane	80 mm Polyurethane
Sheath: Coated	80 mm Foam
	Sheath: Winlex



Elegance Accumulation Capacity Table

MODEL	ELG-A 100 lt	ELG-A 160 lt	ELG-A 200 lt	ELG-A 300 lt	ELG-A 400 lt	ELG-A 500 lt	ELG-A 600 lt	ELG-A 800 lt	ELG-A 1000 lt	ELG-A 1500 lt	ELG-A 2000 lt	ELG-A 2500 lt	ELG-A 3000 lt	ELG-A 4000 lt	ELG-A 5000 lt	ELG-A 6000 lt
Total Capacity (lt)	100	160	200	300	400	500	600	800	1000	1500	2000	2500	2500	4000	5000	6000
Weight (kg)	54	66	75	93	110	134	152	203	231	282	411	483	536	819	950	1025
Outer Diameter (mm)	D2 550	550	550	642	740	740	740	910	1010	1020	1272	1472	1472	1672	1672	1672
Height (mm)	D4 970	1455	1505	1580	1515	1895	2145	1975	2170	2370	2400	2330	2580	2765	2930	3160
Internal Tank (Sheet)	3 mm	3 mm	3 mm	3 mm	3 mm	3 mm	3 mm	4 mm	4 mm	4 mm	5 mm	5 mm	5 mm	6 mm	6 mm	6 mm

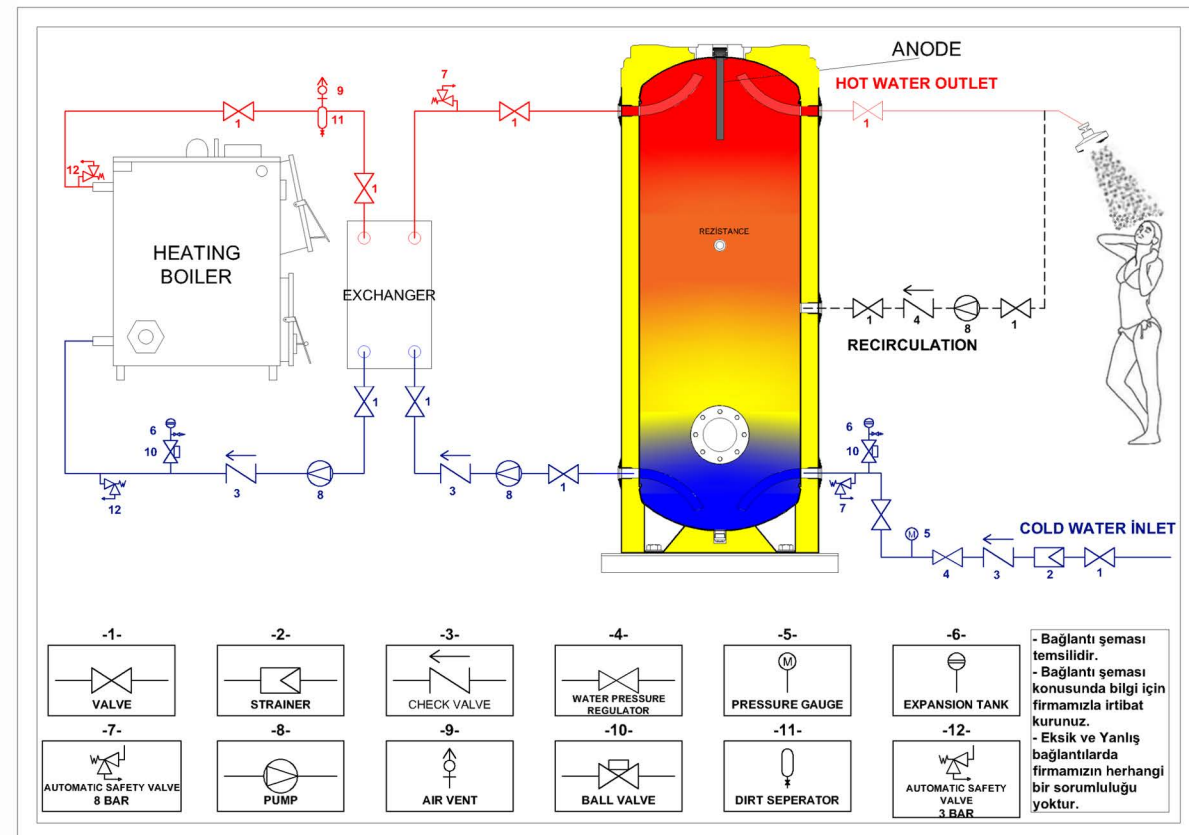
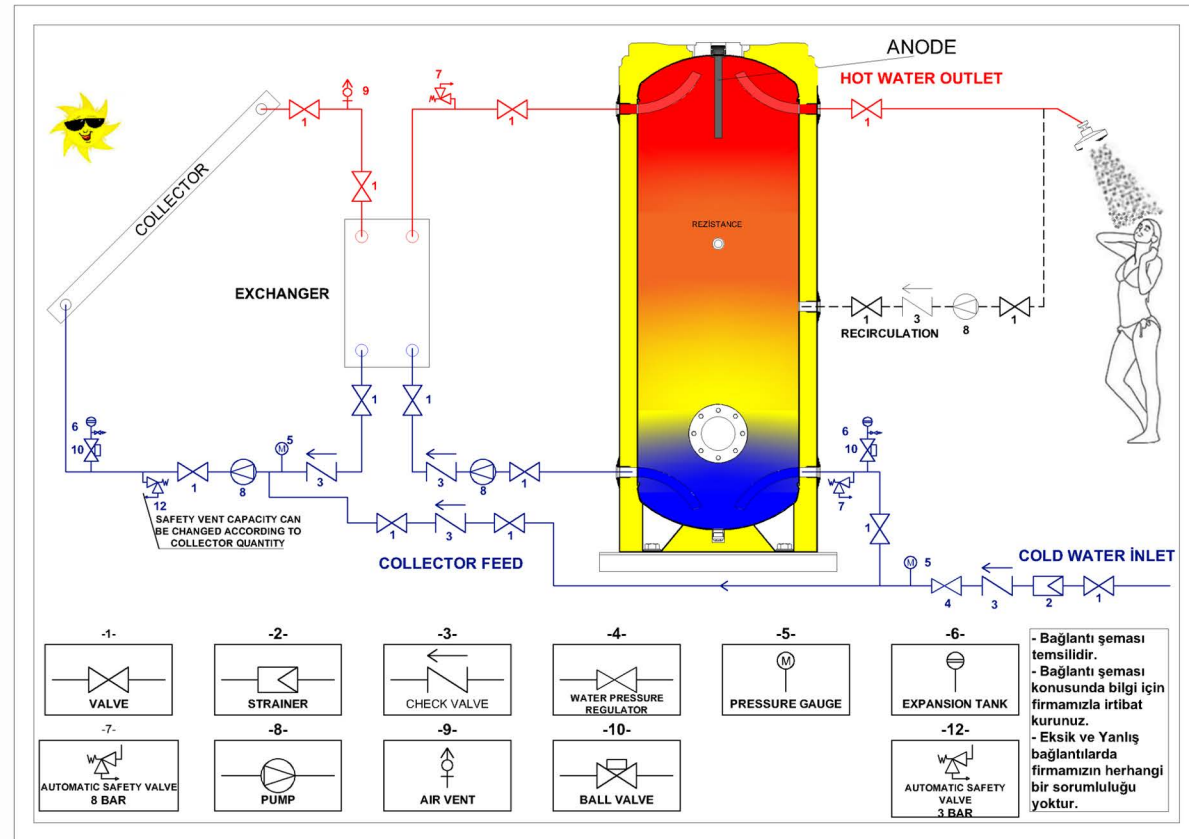


Elegance Accumulation Size Specification Table

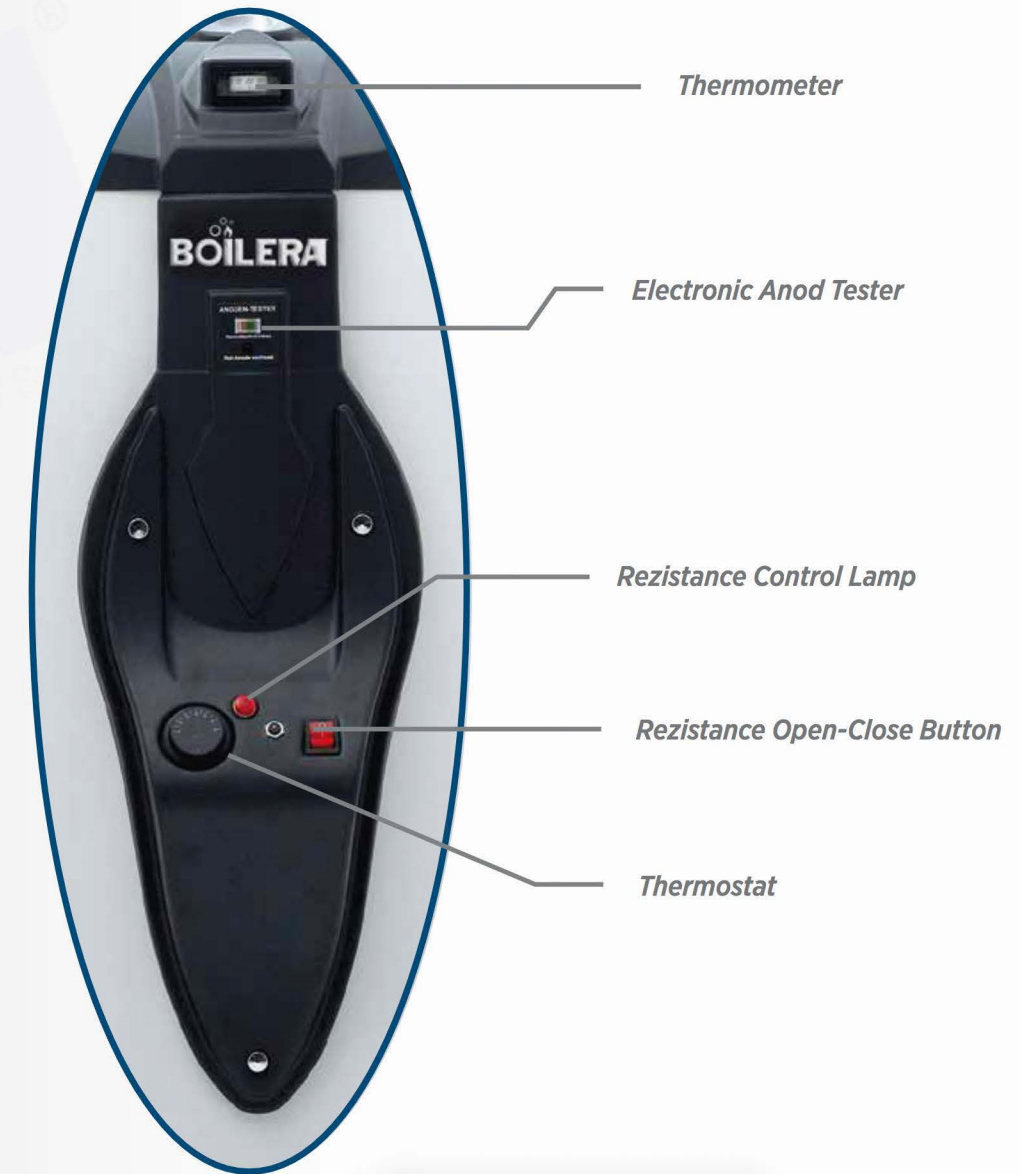
MODEL	ELG-A 100 lt	ELG-A 160 lt	ELG-A 200 lt	ELG-A 300 lt	ELG-A 400 lt	ELG-A 500 lt	ELG-A 600 lt	ELG-A 800 lt	ELG-A 1000 lt	ELG-A 1500 lt	ELG-A 2000 lt	ELG-A 2500 lt	ELG-A 3000 lt	ELG-A 4000 lt	ELG-A 5000 lt	ELG-A 6000 lt
Cold Water Inlet	b1 1"	1"	1"	1"	1"	1"	1"	1-1/4"	1-1/4"	1-1/4"	1-1/4"	2-1/2"	2-1/2"	3"	3"	3"
Hot Water Outlet	b2 1"	1"	1"	1"	1"	1"	1"	1-1/4"	1-1/4"	1-1/4"	1-1/4"	2-1/2"	2-1/2"	3"	3"	3"
By-Pass	b3 1"	1"	1"	1"	1"	1"	1"	1-1/4"	1-1/4"	1-1/4"	1-1/4"	2"	2"	2"	2"	2"
Sensor	b7 1/2"	1/2"	1/2"	1/2"	1/2"	1/2"	1/2"	1/2"	1/2"	1/2"	1/2"	1/2"	1/2"	1/2"	1/2"	1/2"
Resistance	b5 1-1/4"	1-1/4"	1-1/4"	2"	2"	2"	2"	2"	2"	2"	2"	2"	2"	2"	2"	2"
Magnesium Anode	b8 1"	1"	1"	1"	1"	1"	1"	1-1/4"	1-1/4"	1-1/4"	1-1/4"	1-1/4"	1-1/4"	1-1/4"	1-1/4"	1-1/4"
Cleaning Flange	b4 108	108	108	108	108	108	108	108	108	108	108	125	125	125	125	125



Elegance Accumulation Connection Schemes



BOILER Control Panel



PREMIUM Horizontal Pressurised Boiler



BOILERA Horizontal Boiler

Premium Horizontal Pressurised Boiler



PREMIUM Horizontal Pressurised Boiler

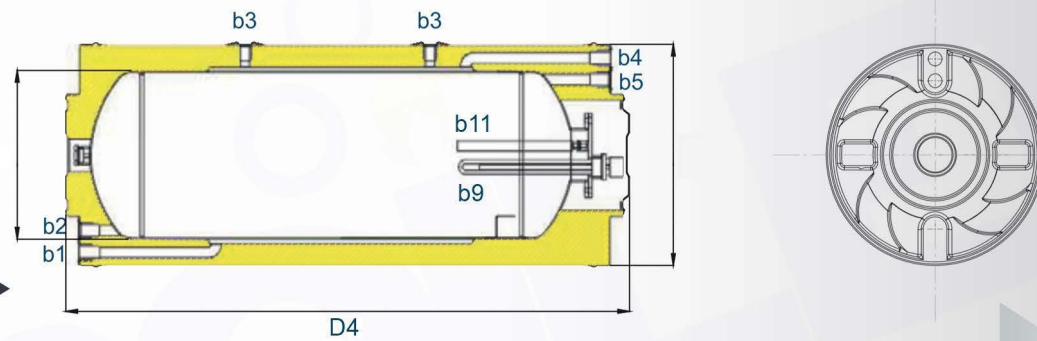
- Designed according to EN12897.
- Steel main body conforming to DIN EN 10111-98 norms.
- Enamel plated internal surfaces conforming to DIN 4753.3 norms.
- Working ability 10 Bars and 95 Degrees of Celcius
- CFC Free Heavy polyurethane (Density: 38KGS/M3)
- Painted and galvanised exterior surface
- Cathodic protection with Magnesium
- ABS, top and bottom covers.
- Resistance heater (Optional)

110 lt-170 lt - 200 lt - 300 lt

50 mm Polyurethane
Sheath : Coated

Premium Pressure Boiler Capacity Table

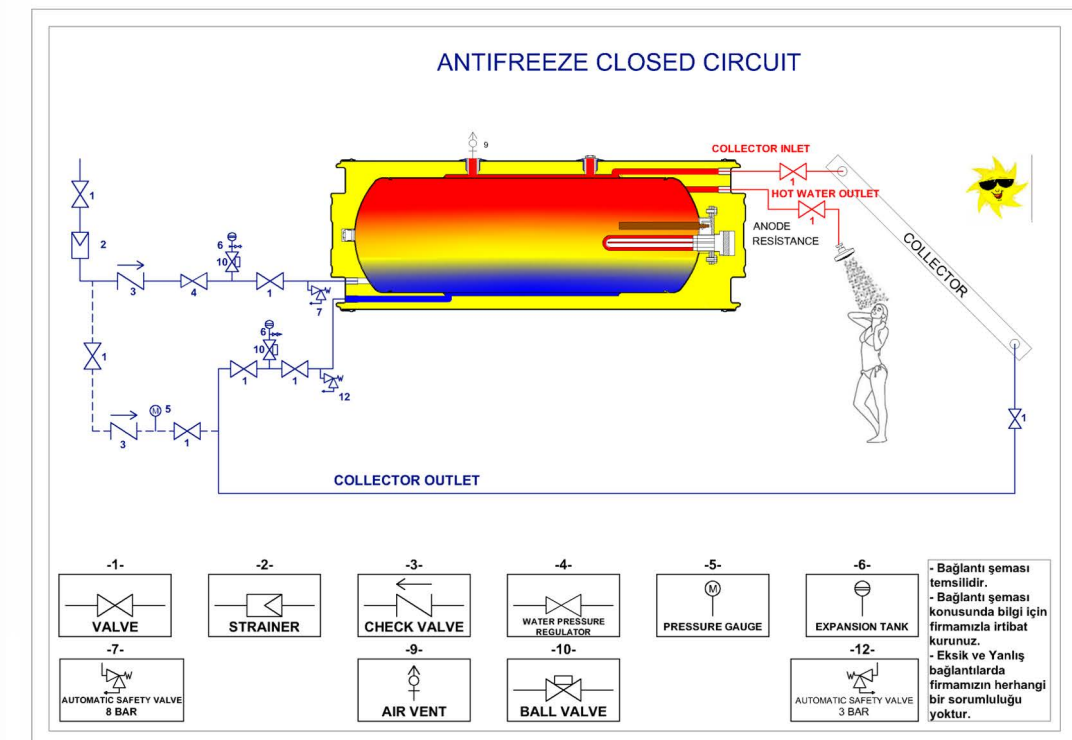
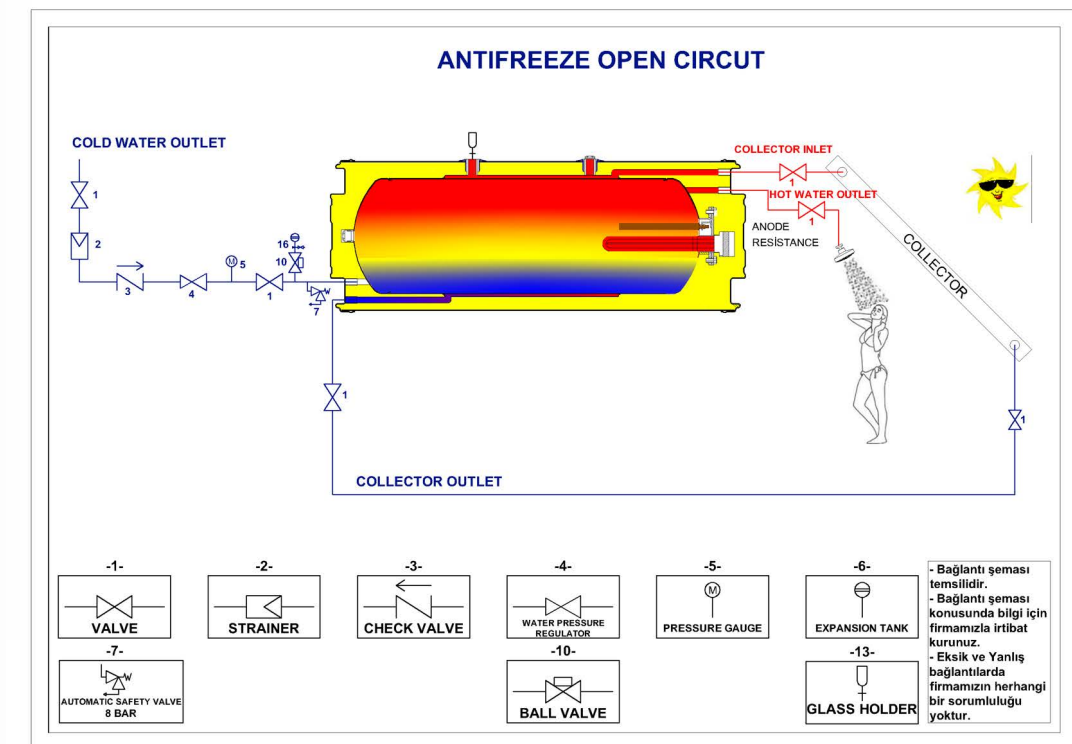
MODEL	PRM 120 lt	PRM 170 lt	PRM 200 lt	PRM 300 lt
Total Capacity (lt)	110	170	200	300
Weight (kg)	55	68	80	110
Outer Diameter (mm)	D2 466	550	550	1920
Height (mm)	D4 1100	1310	1453	550
Internal Tank (Sheet)	3 mm	3 mm	3 mm	3 mm



Premium Pressure Boiler Size Specification Table

MODEL	PRM 110 lt	PRM 170 lt	PRM 200 lt	PRM 300 lt
Cold Water Inlet	3/4"	3/4"	3/4"	3/4"
Hot Water Outlet	3/4"	3/4"	3/4"	3/4"
Central Heating Inlet	b4 3/4"	3/4"	3/4"	3/4"
Central Heating Outlet	b1 3/4"	3/4"	3/4"	3/4"
Resistance	b9 1-1/4"	1-1/4"	1-1/4"	1-1/4"
Magnesium Anode	b11 1"	1"	1"	1"
Antifreeze Ventilation	b9 1/2"	1/2"	1/2"	1/2"

Premium Pressure Boiler Connection Schematic



PREMIUM Boiler With Double Coil



BOILERA Horizontal Boiler

Premium Horizontal Pressurised Boiler



PREMIUM Horizontal Pressurised Boiler

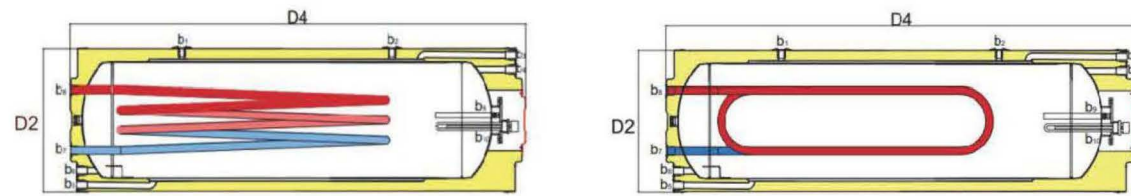
- Designed according to EN12897.
- Steel main body conforming to DIN EN 10111-98 norms.
- Enamel plated internal surfaces conforming to DIN 4753.3 norms.
- Working ability 10 Bars and 95 Degrees of Celcius
- CFC Free Heavy polyurethane (Density: 38KGS/M3)
- Painted and galvanised exterior surface
- Cathodic protection with Magnesium
- ABS, top and bottom covers.
- Resistance heater (Optional)

110 lt-170 lt - 200 lt - 300 lt

50 mm Polyurethane
Sheath : Coated

Premium Boiler With Double Coin Capacity Table

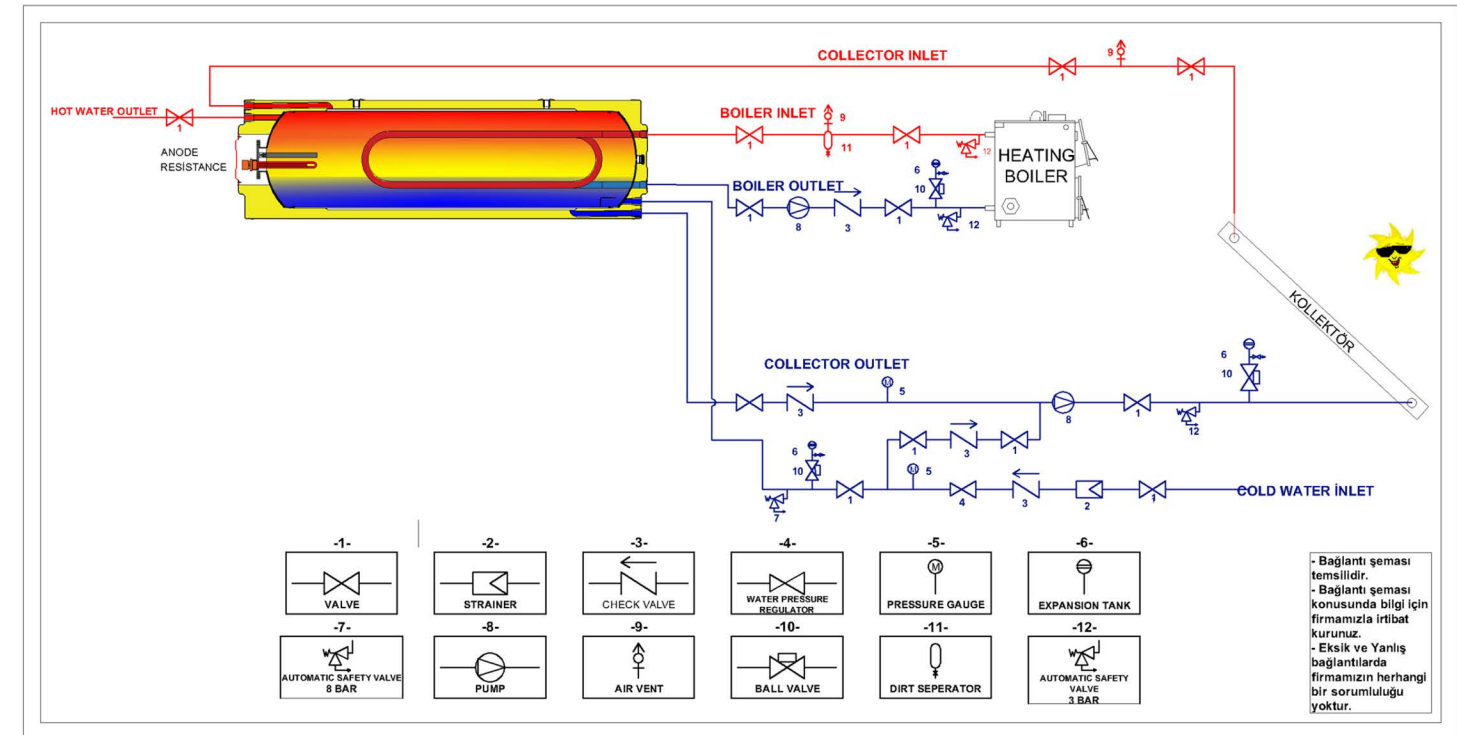
MODEL	PRM 120 lt	PRM 170 lt	PRM 200 lt	PRM 300 lt
Total Capacity (lt)	120	170	200	300
Weight (kg)	75	90	110	145
Outer Diameter (mm)	D2 550	550	550	550
Height (mm)	D4 1100	1310	1453	1920
Internal Tank (Sheet)	3 mm	3 mm	3 mm	3 mm



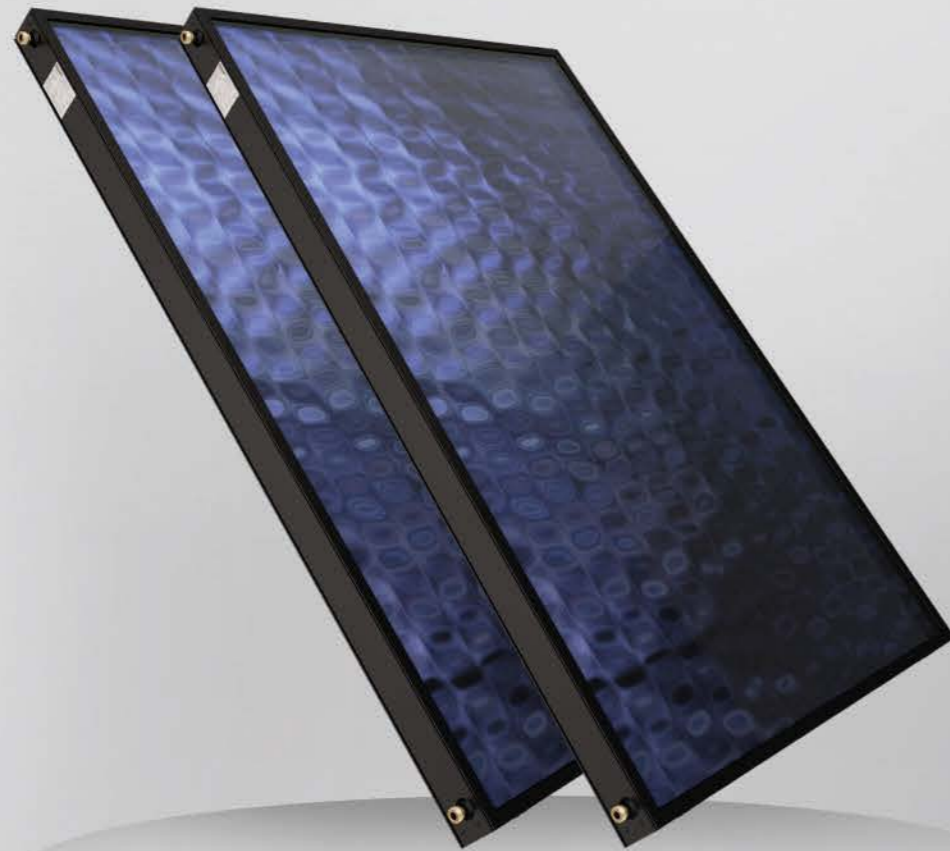
Premium Boiler With Double Coin Size Specification Table

MODEL	PRM 120 lt	PRM 170 lt	PRM 200 lt	PRM 300 lt
Cold Water Inlet	b6 3/4"	3/4"	3/4"	3/4"
Hot Water Outlet	b4 3/4"	3/4"	3/4"	3/4"
Central Heating Inlet	b8 3/4"	3/4"	3/4"	3/4"
Central Heating Outlet	b7 3/4"	3/4"	3/4"	3/4"
Resistance	b10 1-1/4"	1-1/4"	1-1/4"	1-1/4"
Magnesium Anode	b9 1"	1"	1"	1"
Antifreeze Ventilation	b1 / b2 1/2"	1/2"	1/2"	1/2"

Premium Boiler With Double Coil Connection Schematic



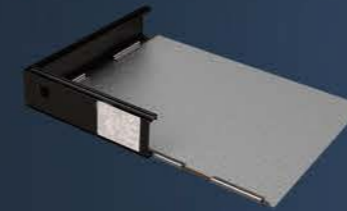
Selective Surfaces Collector



BOILERA Collector

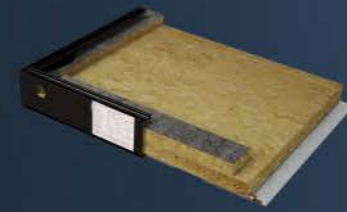
Collector With Selective Surfaces

Collector with selective surfaces

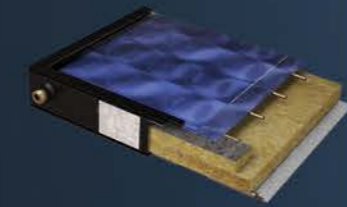


Our selective surface collectors consist of joining Full Plate Copper or Aluminum selective surface to Copper pipes by laser welding.

The absorption rate of the sun rays of the selective surface used on the surface is 95% and the reflectance rate is 3%. It is made in two different sizes. The standard one is 934x1935x100 mm and the wide one is 1235x1935x100 mm.

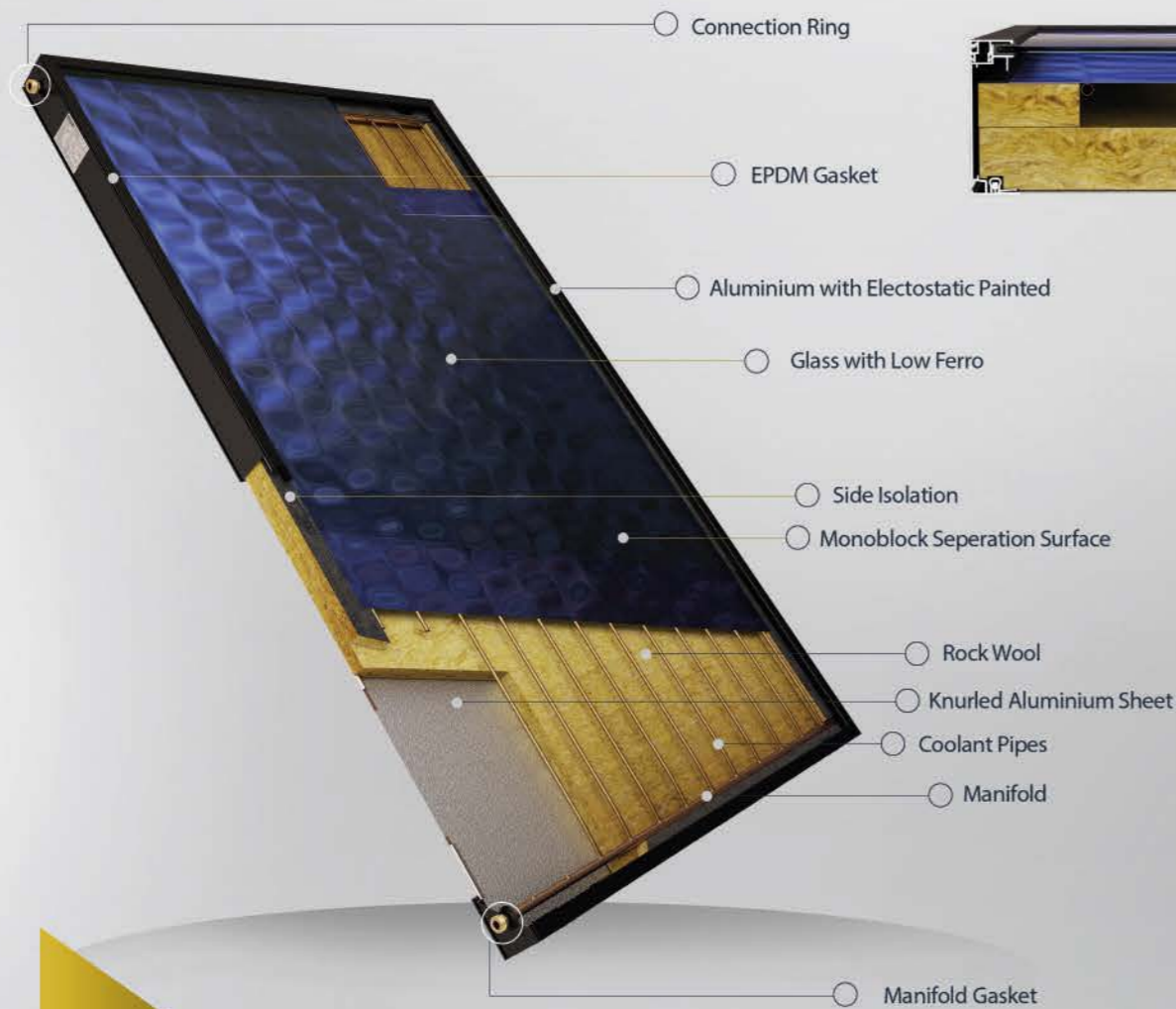


Electrostatic painted or anodized coated aluminum snap lath and outer casing produced from the case protects the collector from external effects, the bottom cover can be made with Embossed Aluminum. In order to prevent heat loss from the panels, the bottom side is insulated with Rock Wool.



Flat glass, tempered glass or low iron oxide tempered Prismatic glass are used as the top cover. EPDM gasket resistant to sunlight and high temperatures is used to ensure the sealing between the glass and the case.

Selective Surface Collector



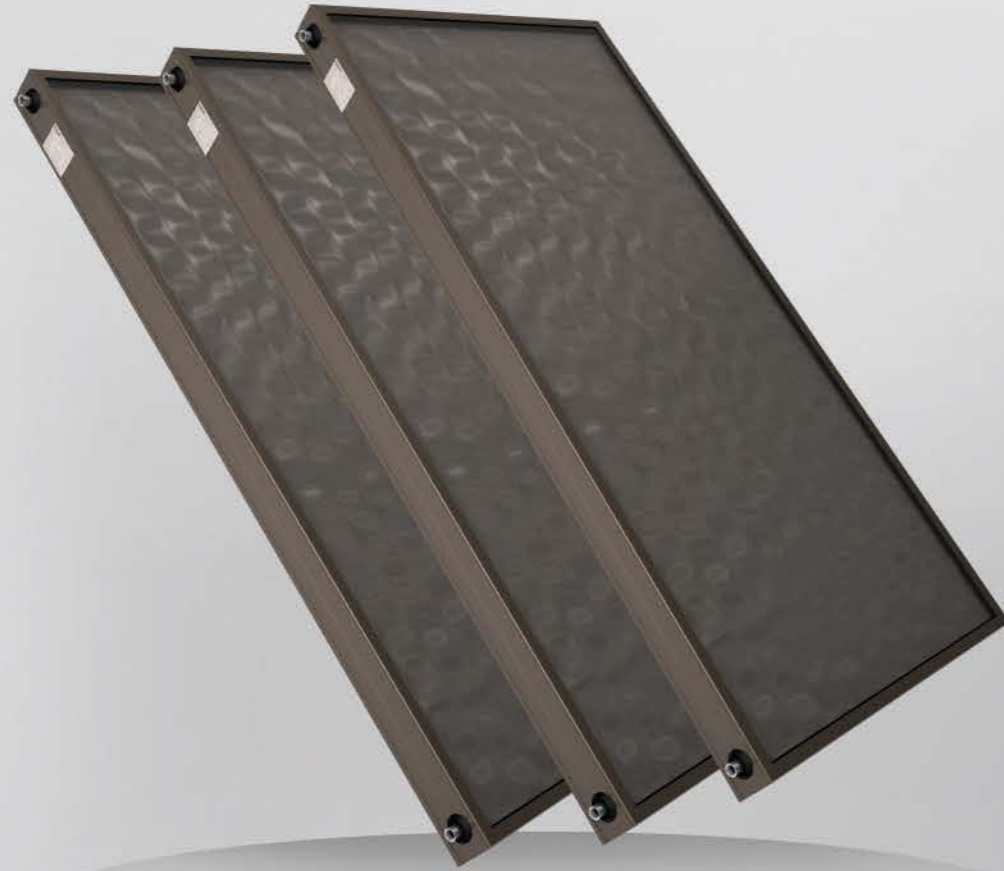
BOILERA Collector

Collector With Selective Surfaces

Collector With Selective Surfaces

Dimensions	1935mmx934mmx100mm
Material Tyoe of Body	Eloxal Aluminium
Weight	32 Kgs
Material Type of Water Protection	EPDM & Silicone
Total Area	1,81 m2
Net Surface Area	1,64 m2
Material Type of Absorber	Copper and Aluminium
Thicknesses of Absorber	0,20 mm / 0,40 mm
Absorbation Ratio	95 %
Radiation Ratio	3 %
Welding Tyoe	Laser
Transferred Liquid Volume	1,15 lt
Diameters of Absorber Pipe	12 mm
Absorber Pipe Thickness	0,50 mm
Pipe Diameters of Head	28 mm
Pipe Thickness of Head	0,80 mm
Absorber Pipe Quantities	8
Range between Absorber Pipes	86 mm
Glass Tyoe	Tempered Glass and Normal Glass
Transparency of Glass	91 %
Thicknesses of Glass	4 mm
Material Type of Isolation	Rock Wool and Glass Wool
Heat Conductivity	0.037 W/mK
Capacity of Isolation Materials	0,84 (KJ)/(kgK)
Density of Isolation Materials	52 M ³
Thicknesses of Isolation Materials	50 mm
Strenght of Heat	199 °C
Maximum Working Pressure	8 Bar
Test Pressure	10 Bar
Material Type of Pipe	Copper
Bottom Sheet	Knurled Aluminium
Application Types	Under Roof

Copper and Aluminium Collector



BOILERA Collector

Collectors With Copper or Aluminium Surfaces

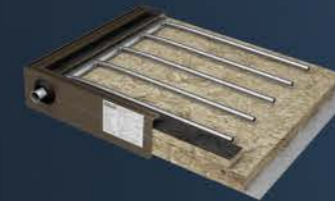
Collectors with Copper or Aluminium Surfaces



It consists of joining the electrostatic black matte painted Full Plate Aluminum surface to Copper or Aluminum pipes by laser welding.



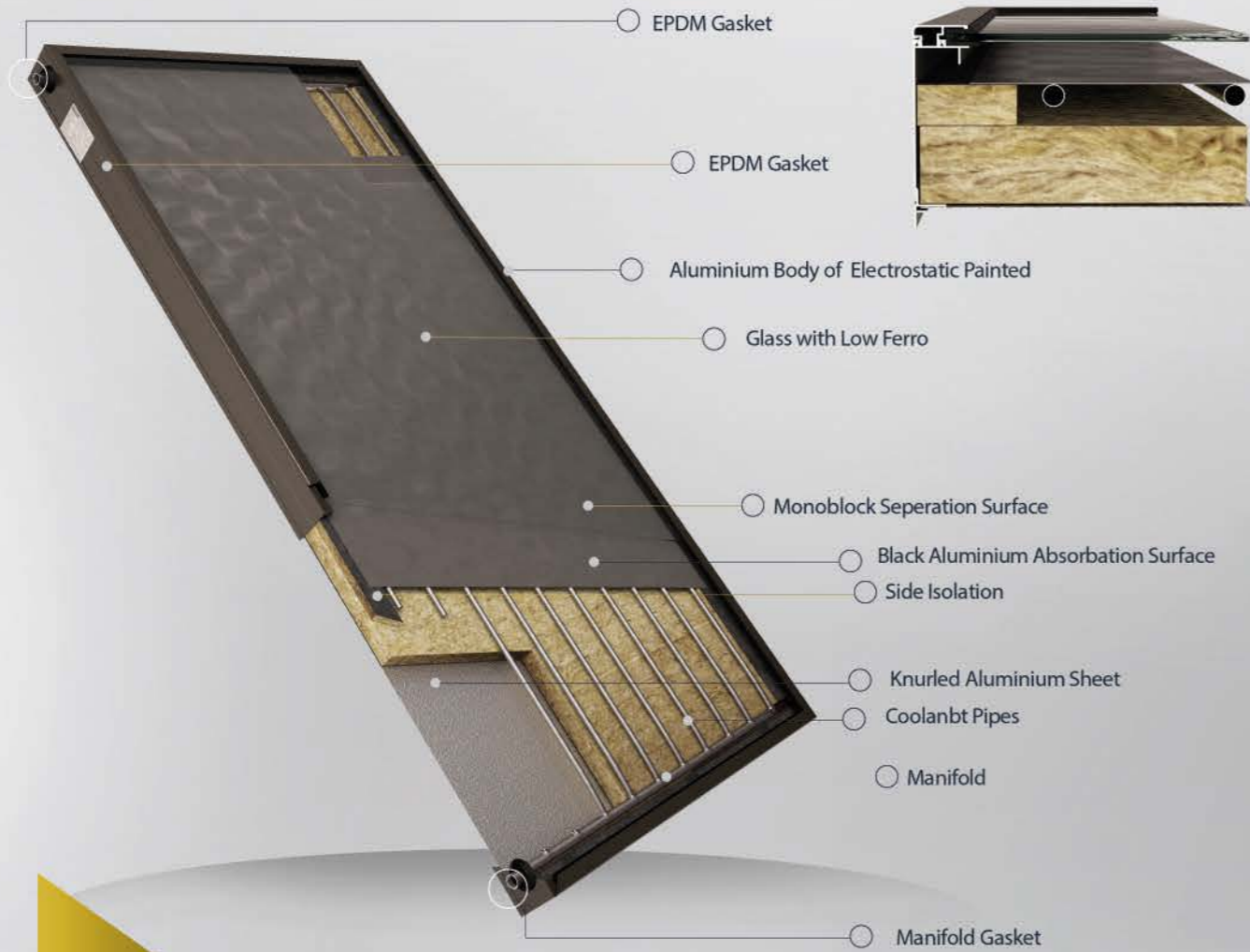
Thanks to the special coating used on the surface, high efficiency is achieved. The collector size is produced as standard in 934x1935x100 mm dimensions. It protects the collector from external effects with the outer casing produced from anodized aluminum snap lath and casing, the bottom cover can be made with Embossed Aluminum.



The bottom side is insulated with Glass Wool to prevent heat loss from the panels. Flat glass, tempered glass or low iron oxide tempered Prismatic glass are used as the top cover.

EPDM gasket, resistant to sunlight and high temperatures, is used to ensure the tightness between the glass and the case.

Copper and Aluminium Collector



BOILERA Collector

Collector with Copper or Aluminium Surfaces

	Aluminium Collector	Copper Collector
--	---------------------	------------------

Dimensions	1935mmx934mmx100mm	1935mmx934mmx100mm
Material Type of Body	Eloxal Aluminium	Eloxal Aluminium
Weight	30 Kg	33 Kg
Material Type of Water Protection	EPDM & Silicone	EPDM & Silicone
Total Surface	1,81 m ²	1,81 m ²
Net Surface	1,64 m ²	1,64 m ²
Material Type of Absorber	Aluminium with Black Painted	Aluminium with Black Painted
Thicknesses of Absorber	0,35 mm	0,35 mm
Absorption Ratio	75 %	75 %
Radiation Ratio	25 %	25 %
Welding Type	Laser	Laser
Transferred Liquid Volume	1,17 lt	1,15 lt
Diameter of Absorber Pipe	12 mm	12 mm
Thicknesses of Absorber Pipe	1,00 mm	0,60 mm
Diameter of Head Pipe	30 mm	28 mm
Thicknesses of Head Pipe	0,80 mm	0,80 mm
Number of Absorber Pipes	10	10
Absorber Pipes Quantity	73 mm	86 mm
Material Types of Glass	Tempered Glass and Normal Glass	Tempered Glass
Transparency of Glass	91 %	91 %
Thicknesses of Glass	4 mm	4 mm
Material Type of Isolator	Glass Wool	Glass Wool
Heat Conductivity	0.037 W/mK	0.037 W/mK
Capacity of Isolation Materials	0,84 (KJ)/(kgK)	0,84 (KJ)/(kgK)
Density of Isolation Materials	52 M ³	52 M ³
Thicknesses of Isolation Materials	50 mm	50 mm
Strength of Heat	135 °C	135 °C
Maximum Working Pressure	8 Bar	8 Bar
Test Pressure	10 Bar	10 Bar
Material Type of Pipe	Aluminium	Copper
Bottom Sheet	Knurled Aluminium	Knurled Aluminium
Application Types	Under Roof	Under Roof